


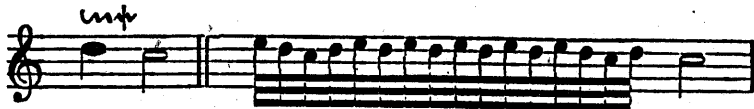


indicates (*tr*) a shake, when the after-note is written at full, for

instance . Under other circumstances 

produce a very bad effect. The sign  which also occurs, is thus explained by J. S. Bach in his Clavierbüchlein for W. F. Bach,



The following manner of writing occurs a few times, for instance, in the third Sonata of the present volume;



where we must bind or slur the first tone of the appoggiatura, which on account of the slur cannot be executed at full, thus,



; the object is thereby attained; and more notes are not necessary. If an arch (or slur) be drawn over a recurrence of the same note, as

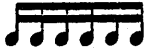



, they are to be treated as if, according to our manner of writing notes, dots were placed under the arch, and bound or slurred as much as possible, which is

best attained by a successive change of fingers, as



in which the touch above-described is understood as a thing of course. The semiquaver-triplets are sometimes printed as real semi-

quavers , sometimes as dotted semiquavers .